

Public Document Pack



Briefing	Children and Young People Select Committee
Date and Time	Wednesday, 7th July, 2021 at 10.00 am
Place	Remote Informal Briefing
Enquiries to	members.services@hants.gov.uk

AGENDA

1. APOLOGIES FOR ABSENCE

To receive any apologies for absence.

2. CHAIRMAN'S ANNOUNCEMENTS

To receive any announcements the Chairman of the Select Committee may wish to make.

3. INTRODUCTION TO SELECT COMMITTEE - GOVERNANCE (Pages 3 - 18)

To receive a presentation on the scrutiny process and surrounding Governance.

4. INTRODUCTION TO SELECT COMMITTEE - CHILDREN'S SERVICES DEPARTMENT

To receive a presentation and introduction to the Children's Services department (*to follow*).

5. DFE HOLIDAY ACTIVITIES AND FOOD (HAF) PROGRAMME (Pages 19 - 32)

To receive a presentation on the Department for Education's Holiday Activities and Food (HAF) Programme.

6. UPDATE ON AUTISM SERVICES COMMISSIONING FOR CHILDREN & YOUNG PEOPLE IN HAMPSHIRE (Pages 33 - 40)

To receive a regular information update (written only) on Autism Services Commissioning for Children and Young People in Hampshire, from the Hampshire and Isle of Wight Partnership of Clinical Commissioning Groups.

7. WORK PROGRAMME (Pages 41 - 48)

To discuss and consider topics for the Children and Young People Select Committee work programme for 2021/22.

This informal briefing is being held remotely to enable County Councillors to receive important updates on County Council services whilst observing Covid related social distancing. Items which are not exempt or confidential will be webcast in the interests of public access and transparency.

Role of Scrutiny at the County Council

**C&YP Select Committee – Informal Briefing
7 July 2021**



Background to Scrutiny

- Formal scrutiny introduced as part of the move to Executive Arrangements following the Local Government Act 2000
- Authorities operating Executive Arrangements must have at least one Scrutiny Committee (HCC currently has 5)

Role and purpose of Scrutiny

- To hold the Executive and the Council to account
- To make recommendations to the Executive or to the County Council arising from the scrutiny process
- To conduct research and analysis of policy issues and possible options
- To assist the Executive and the County Council in the development of the Budget and Policy Framework

Terms of Reference

Children & Young People Select Committee

- Key Executive Member – Executive Lead Member for Children’s Services (also covers part of the portfolio of the Executive Member for Performance, Human Resources and Partnerships)
- Key Department – Children’s Services (however remit is not limited to these)
- Reviewing how the needs and interest of children and young people are met by all Departments, policies, services and decisions; and how performance is evaluated and improved.
- Includes: Universal, targeted and specialist services for children and young people: prevention and management of risk; social care; children’s and young people’s wellbeing; education – supporting and enabling learning for all children and young people; internal and external partnership working re Children and Young People; supporting parents and families; relevant financial management.



Holding the Executive and the Council to Account

- Scrutinising decisions which the Executive is due to consider (Pre-scrutiny)
- Scrutinising Executive decisions that have been taken before they are implemented (Call-in)
- Scrutinising Executive decisions after they have been implemented, whether shortly afterwards or as part of a wider review of policy to measure their effect
- The Children and Young People Select Committee, when dealing with the education Functions of the Executive shall include in its membership the following voting representatives: one Church of England Diocese representative; one Roman Catholic Diocese representative; three Parent Governor representatives.



Scrutiny of Decisions

- Issues to consider when scrutinising decisions:
 - Are decisions evidence based?
 - Has appropriate consultation been undertaken?
 - Do decisions reflect the County Council's priorities?
 - Have alternative options been considered?



Call-in

- Only applies where a decision has been made but not yet implemented
- Can only be done within 5 working days of the date members have been notified of the decision
- A quorum of members can call a meeting of a select committee to consider an executive decision. The Committee must meet within 14 days of the of meeting being called

Call in options

The Committee must decide whether or not to recommend:

- That the decision be reconsidered by the relevant decision maker
- Where the decision is not in line with the Policy or Budget Framework, that the County Council should take that decision

Effect of call-in

- Any decision which is not in line with the Policy or Budget Framework cannot be implemented until the call in has been disposed of
- Urgent Key Decisions cannot be called in although they can still be scrutinised by the committee

Policy Development and Review

- Key work stream is to review and make recommendations either to the Executive or to the Full Council to assist in the development of future policies and strategies
 - Contribute to development of new or improved council policies and strategies
 - Proactive review where there may be gaps / a change in the law
- Select Committees also have a role in reviewing existing policy, to consider:
 - Do we have a clear and up to date approach?
 - Is it the right approach?
 - Are policies coherent and joined up?
 - Are the policies effective when put into action - is it working? Are they delivering what was intended?



Working Groups

- Group of Members identified to meet outside of the formal committee meetings
- Focuses on a topic where SC feels there is benefit to review
- Aims and timescale scoped, meetings held with relevant officers to discuss, evidence can be sought, culminates in summary of findings and recommendations where relevant



Items for the Agenda

- Any member of the Committee can request to put an item on the agenda of the next convenient meeting of the committee
- Any member of the County Council can refer a matter to a Select Committee provided it is relevant to the function of that committee
- The Executive or the County Council may request that a Committee considers a matter referred by them



Topic Suggestions

- Suggestions welcome at any time to the Chairman or Democratic Support
- Make clear the reason for the request – is there evidence this is an area of concern? (e.g. performance data, frequently raised by constituents) – is it a County wide rather than local issue?
- Member Briefing Programme takes place monthly – for information items

Agenda Formation

- Rolling Work Programme
- Agenda Planning Meetings

Attendance at meetings – it is the duty of officers and the Executive Members to attend meetings of the Select Committee if required (others can be invited but aren't required to attend)



What will success look like?

- Scrutiny function is Member led
- Work programme is realistic, flexible and focused
- Topics are prioritised appropriately
- Reviews well scoped and project managed to ensure they are timely and improvement focused
- Time and resources directed where it can add most value
- Constructive and evidence based

Conclusion

- Role of scrutiny is wider than simply holding the Executive to account
- There needs to be an effective dialogue between scrutiny committees, the Executive and key officers to ensure that the work of committees contributes to policy setting and decision making



April – December 2021

Holiday Activities and Food Programme

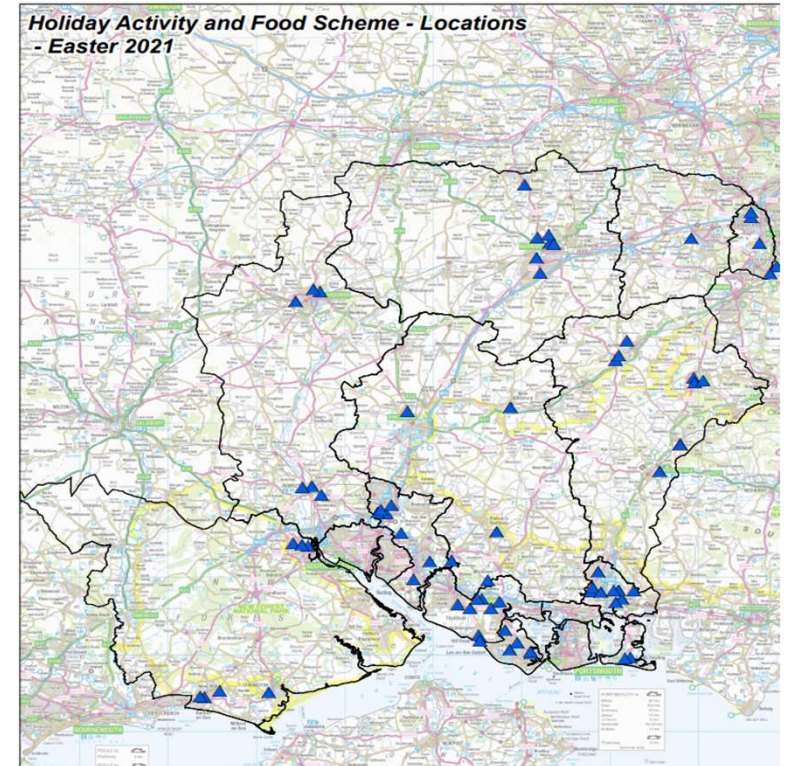
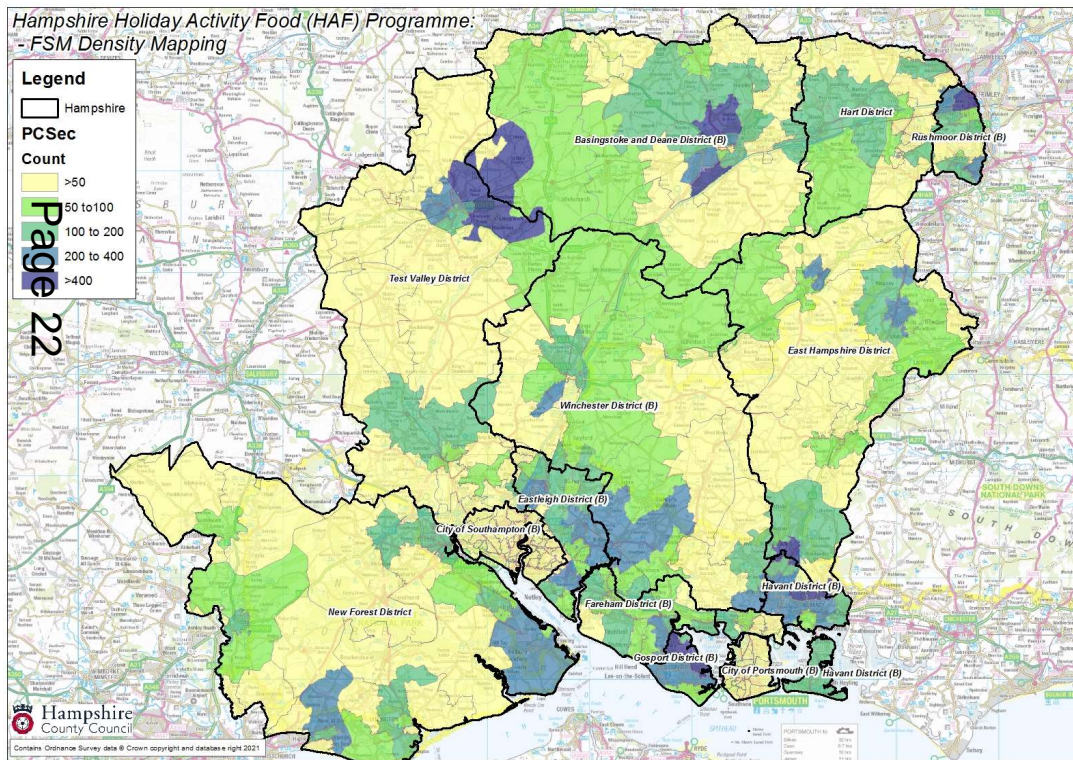
The HAF Programme

- DfE funding: £3.3M for Hampshire
- To fund holiday activity schemes to include a meal for benefits-eligible FSM children and young people
- Easter, Summer and Christmas school holidays
 - one week at Easter
 - four weeks in the summer, and
 - a week at Christmas
- Sessions of at least 4 hours
- Hampshire has c.26,384 FSM eligible children and young people. Aiming to commission 8,000 – 13,000 spaces

Programme Aims

- To eat more healthily over the school holidays
- To be more active during the school holidays
- To take part in engaging and enriching activities which support the development of resilience, character and well being along with their wider education attainment
- To be safe and not to be socially isolated
- To have greater knowledge of health nutrition
- To be more engaged with school and other local services

Distribution of Benefits-Eligible Free School Meal Children and Easter Supply



Easter 2021

- 71 applications were received from 33 organisations
- Three types of grant:
 - Grant Type A – Adding New Places
 - Grant Type B – Branching Out
 - Grant Type C – Creating and Connecting
- 51 grant awards up to a total value of £384,576.
- 6,330 places were commissioned on existing activity schemes (grant types A and B), 89% of those places were booked for eligible children. 82% of booked places were attended.
- Grant type C provided an additional 3,370 places.

Lessons Learned

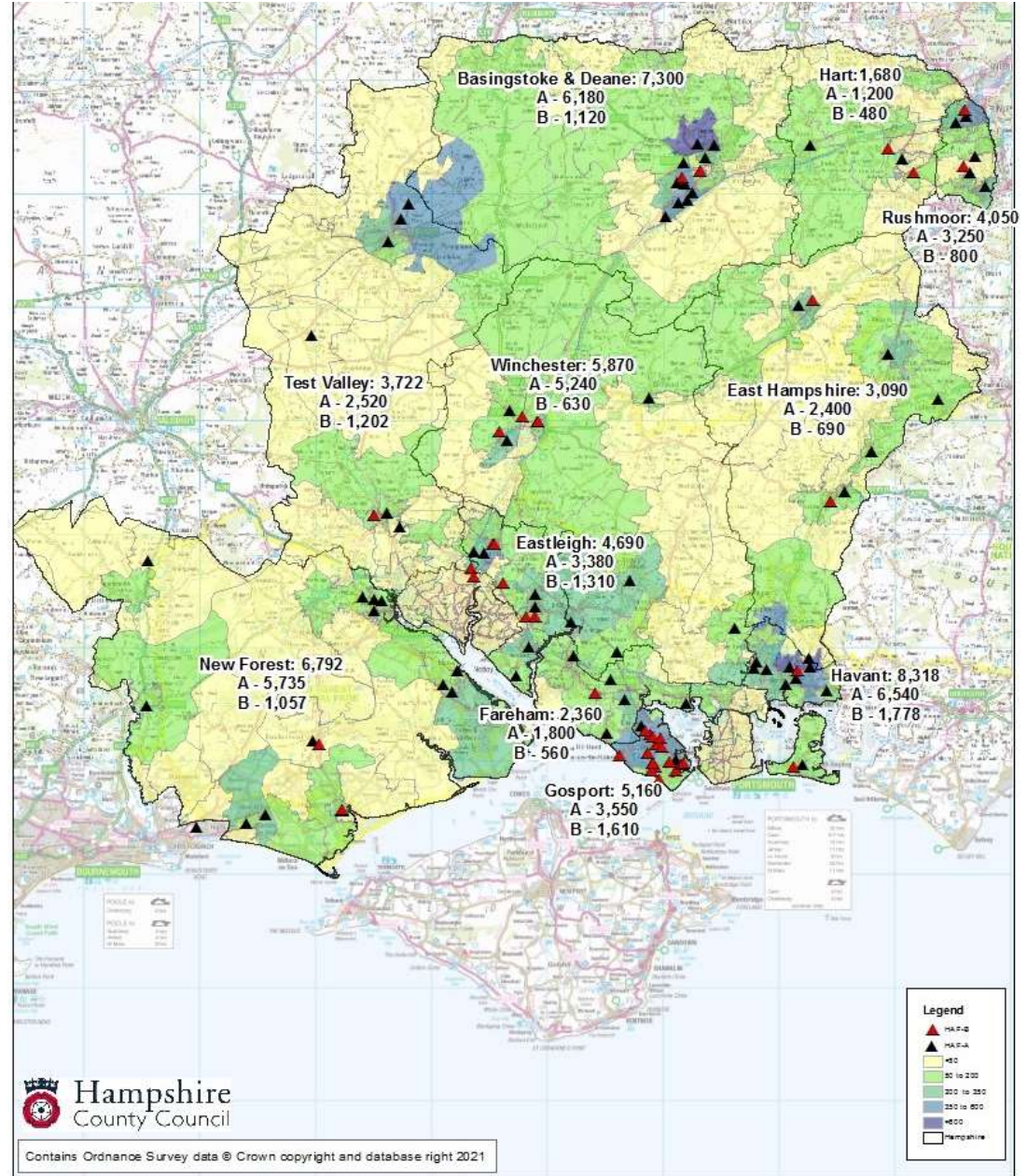
- Smaller, community-based providers were more successful in achieving high take up of places
- Larger providers sometimes relied on electronic booking systems
- While activity and food provision was good, providers did not always meet the other HAF standards for:
 - Signposting to other support providers
 - Nutritional education for children and for families
- There were some gaps in provision across rural areas and in small pockets of deprivation

Summer 2021

- On 8 June 2021, Councillor Chadd approved 108 separate grant awards totalling approximately £2.06 million.
- Two types of grant:
 - Grant Type A – Existing or New Childcare Places
 - Grant Type B – Events, short activities, innovative projects and initiatives
- Under Type A applications were received from 40 organisations for 94 projects.
- Under Type B applications were received from 17 organisations for 45 projects.
- The Summer Hampshire HAF Programme through the recommended awards aims to secure 53,032 places, which will provide for 6,778 – 13,556 FSM children to access the scheme.
- There are 59 schools that DFE have informed will be doing Summer Catch up of which 13 (22%) have HAF projects on site. DFE final date for schools to offer is 30 June 2021.

Distribution of Benefits-Eligible Free School Meal Children and Young People and Summer supply

Page 26



Applying Lessons Learnt from Easter

- All areas of Hampshire have some provision, including rural areas and pockets of deprivation, as well as the areas with large numbers of FSM children
- There is a defined signposting offer, supported by referral information and video snippets
- There is a comprehensive training offer for providers, covering all the HAF standards, as well as other topics of relevance such as managing behaviour, Covid and mental health
- Information is being provided on incorporating nutritional education in HAF schemes
- A webinar on converting bookings to take up of places is being held to address non-attendance.

Partners and Signposting

Positive engagement with our partners and offers continually being explored, evolving and confirmed:

Libraries
Book Trust
Southern Health
Public Health
Hampshire CCGs
Job Centre Plus
Citizens Advice
Voluntary Services
Food banks and pantries
HC3S
Police
Schools
Districts and Boroughs



- Contacts for relevant services, e.g. school nurse teams, food pantries, Citizen's Advice
- Useful information, e.g. the Kooth mental health app for young people, the Summer Reading Challenge and literacy support by libraries, Job Centre Plus
- Links to additional resources, including video clips by advice agencies on available services
- Provider training sessions

Provider Training and Induction

Page 29

Session	Date	Topic	Details
1	28/29 June	Welcome, Introductions and Induction	Terms and conditions of funding; managing bookings; managing attendance; HAF standards; Monitoring tool; OFSTED registration
2	5/6 July	Covid Management	Latest Covid advice for settings; FISH – the Family Information and Services Hub; the MOODLE learning platform and other training resources
3	12/13 July	Food, Nutrition and Physical Activity	
4	19/20 July	Safeguarding, Signposting & Referrals to Support	

Provider Monitoring

Page 30





Any Questions?

Page 31

Contact details: connect4communities@hants.gov.uk

This page is intentionally left blank

HAMPSHIRE COUNTY COUNCIL

Report

Committee:	Children and Young People Select Committee Briefing
Date:	7 July 2021
Title:	Update on Autism Services Commissioning for Children and Young People in Hampshire
Report From:	Maternity and Children's Commissioning Team Hampshire, Southampton and Isle of Wight CCG

Contact name: Matt Powell, Associate Director for SEND/Designated Clinical Officer

Tel: 02380 627599

Email: matthew.powell7@nhs.net

Purpose of this Report

- 1 As requested by the committee in September 2020, this report provides a regular information update regarding progress made towards improving Autism services for children and young people in Hampshire, in order to provide assurance to the committee and the communities it represents that ASC assessments and supporting services are improving.

Background

- 2 In 2018 a decision was made by the then 5 Hampshire CCGs to transfer a large cohort of children and young people waiting for an ASC (Autism Spectrum Condition) assessment from Hampshire CAMHS to an interim service, in order to clear the backlog.
- 3 Over the last three years commissioning arrangements for ASC assessments have been characterised by short term blocks of activity, defined, and limited by available funding. This approach has not been able to successfully respond to growing demand and has resulted in increased waiting lists.
- 4 In November 2020, the following recurrent funding was identified for Hampshire CCG's areas to implement a new pathway, including the procurement of an assessment service and supporting pre and post diagnostic services. This funding was added to existing funding in place for children and young people living on the Isle of Wight to enable the procurement of a joint and equitable service.

Part Year Spend 2020/2021	£1.36m
Full Year Spend 2021/2022	£2.1m
Full Year Spend 2022/2023	£2.1m
Full Year Spend 2023/2024	£2.1m
Ongoing (from 2024/2025 onwards)	£1.5m

Progress to Date

- 5 Interim providers are still working at pace to deliver autism assessments, with commissioners monitoring progress on a monthly basis. The current Hampshire waiting list is projected to be below 1000 by the contract end date of 30th September 2021 compared to its peak at 1750 in September 2020
- 6 If a child or young person is referred into the current service today, the approximate waiting time will be 10 months from referral to assessment. This is a significant improvement compared with a 35 month waiting time in September 2020.
- 7 In early 2021, a revised and improved service specification for the new service was agreed. The service specification was built jointly with families, clinical experts and relevant professionals across multiple agencies and disciplines.

Procurement

- 8 A robust competitive procurement for a new ASC assessment service has now concluded. A preferred bidder has been selected and the formal outcome will shortly be published (end of June 2021) following final ratification from the Hampshire, Southampton and Isle of Wight CCG and the Frimley CCG (of which children leaving in North East Hampshire come under).
- 9 The new, long term service will start on October 1st 2021 for 2.5 years until 31st March 2024. The service is predicted to meet national waiting time standards by the end of the new contract. Commissioners acknowledge that this pace of assessment delivery is slower than ideal. However, investing into the improvement of pre-diagnostic support services, we anticipate that referrals will reduce and subsequently further reduce the number of assessments required which will ensure that waiting times do not increase.
- 10 Key improvements and changes agreed for new service:
 - Expanded age range of 3yrs (originally 5 yrs) to 18yrs (19yrs with a learning disability)
 - Ability to offer follow-up session post assessment.
 - Provide an accessible and flexible NICE Complaint service which supports patient choice, family life and offers a range of assessment formats including face to face, online and hybrid models

- Offer a follow up session with the family post assessment, to go through the report and signpost onto helpful local services, both internal and external to the NHS. If a diagnosis is not reached, findings should still be shared with the family via a follow up session offer.
- Provide a local service, with established local links which ensures joint working with other agencies and services, including clear specific and meaningful signposting to the child and family.
- Ensure that children and their parent/carers are involved in each step of the pathway.
- Continue to work with Hampshire and Isle of Wight Commissioners to develop services for autism and other neurodevelopmental conditions.

Other areas of Progress

- 11 The Hampshire County Council Primary Behaviour Service has been commissioned since late 2020 to deliver the Children's Wellbeing Support Service. Referrals remain high.
- 12 The service is designed to offer early intervention and support service for parents of children with Social, Emotional and Mental Health (SEMH) needs as well as Autism, Attention Deficit Disorder, Attachment Disorder, anxiety and poor emotional wellbeing.
- 13 Families identified as having difficulties such as the above can be referred to the Wellbeing Support Service who will work with parents to identify needs and recommend onward support where appropriate.
- 14 By providing early, targeted support through a child-centred approach, the service aims to:
 - Support parent(s) to enable children to self-manage and maintain good emotional wellbeing
 - Reduce inappropriate diagnosis
 - Support parent(s) to enable children to get the most from their education
 - Promote a healthy home environment and improve family dynamics
 - Promote inclusion in schools

A dedicated team of experienced practitioners provide the following services and support for children living in Hampshire:

- Support parents to evaluate their child's needs, behaviour and emotional wellbeing
- Support for parents/carers, including help with developing a positive home/school relationship, as well as direct work with parents/carers
- Support families regarding crisis management and conflict resolution
- Support parents to learn strategies that work for them, so that they can enable their child to self-regulate their behaviour
- Support families to develop their strengths, emotional resilience and independence

- Support families to become better engaged with their child’s learning and enable them to access more of the curriculum
- As neurodevelopmental pathways continue to improve the service will become one of the first points of contact providing an early intervention service.

Initial and ongoing feedback received from families has been extremely positive, examples below:

- *“Thank you so much for your quick response, you could not have been any better. It has really made such a positive difference for this family. Thank you.”*
- *“Thank you so much. I feel like we are finally getting somewhere now, I have tried to get help for her since she was about 5 and didn’t really get anywhere”.*
- *“thank you for listening and understanding – you are the first person to listen to my needs”.*
- *“We will see if these changes make a big enough impact, as well as using strategies that you have suggested, before making a CAMHS referral.”*

- 15 Autism Hampshire has been commissioned up until 31st March 2022 as a pilot to deliver parent support workshops, and school staff training focusing on supporting children and young people with traits of autism. If deemed effective commissioners will consider long term commissioning arrangements for this service.
- 16 A Re-Procurement of Hampshire Therapy (Speech and Language, Occupational Health etc) service is currently underway. Feedback from Hampshire families with children presenting with traits of Autism, has indicated a gap in the current therapies service regarding sensory support. The Therapies Project team has included this feedback into the service specification and quality workstream to ensure sensory support is included and funded appropriately within the new service.
- 17 Multi-Disciplinary/Agency ‘Filtering’ Panels will be established to review all referrals requesting autism Assessments and agree on the most appropriate intervention to ensure support is offered at the earliest point possible.
- 18 Commissioners will continue to explore opportunities to embed further multi-disciplinary, pre and post assessment support for children and young people presenting with traits of Autism. The Hampshire and Isle of Wight ASC Transformation Group, attended by system wide partners and families will monitor the effectiveness of the current services as well as assessment waiting times and report progress to the Hampshire, Southampton and Isle of Wight CCG Complex Care and Autism Board.

Consultation and Equalities

- 19 An Equality/Quality Impact Assessment has been developed and is under review by the CCG Quality team.

Conclusions

- 20 Although significant progress has been made to date, commissioners will continue to provide regular updates at each select committee meeting until committee members are fully reassured.

**REQUIRED CORPORATE AND LEGAL INFORMATION:
Links to the Strategic Plan**

Hampshire maintains strong and sustainable economic growth and prosperity:	No
People in Hampshire live safe, healthy and independent lives:	Yes
People in Hampshire enjoy a rich and diverse environment:	No
People in Hampshire enjoy being part of strong, inclusive communities:	yes

Other Significant Links

Links to previous Member decisions:	
<u>Title</u>	<u>Date</u>
Direct links to specific legislation or Government Directives	
<u>Title</u> Children and Families Act [Part 3 SEND] 2014 http://www.legislation.gov.uk/ukpga/2014/6/contents/enacted Statutory Guidance: SEND Code of Practice 0-25 https://www.gov.uk/government/uploads/system/uploads/attachment_data/file/398815/SEND Code of Practice January 2015.pdf	<u>Date</u> September 2014 January 2015
Local area SEND inspection framework (Ofsted and CQC) https://www.gov.uk/government/publications/local-area-sendinspection-framework	April 2016
Section 100 D - Local Government Act 1972 - background documents The following documents discuss facts or matters on which this report, or an important part of it, is based and have been relied upon to a material extent in the preparation of this report. (NB: the list excludes published works and any documents which disclose exempt or confidential information as defined in the Act.)	
<u>Document</u>	<u>Location</u>
None	

EQUALITIES IMPACT ASSESSMENT:

1. Equality Duty

The County Council has a duty under Section 149 of the Equality Act 2010 ('the Act') to have due regard in the exercise of its functions to the need to:

- Eliminate discrimination, harassment and victimisation and any other conduct prohibited by or under the Act with regard to the protected characteristics as set out in section 4 of the Act (age, disability, gender reassignment, marriage and civil partnership, pregnancy and maternity, race, religion or belief, sex and sexual orientation);
- Advance equality of opportunity between persons who share a relevant protected characteristic within section 149(7) of the Act (age, disability, gender reassignment, pregnancy and maternity, race, religion or belief, sex and sexual orientation) and those who do not share it;
- Foster good relations between persons who share a relevant protected characteristic within section 149(7) of the Act (see above) and persons who do not share it.

Due regard in this context involves having due regard in particular to:

- The need to remove or minimise disadvantages suffered by persons sharing a relevant protected characteristic that are connected to that characteristic;
- Take steps to meet the needs of persons sharing a relevant protected characteristic that are different from the needs of persons who do not share it;
- Encourage persons sharing a relevant protected characteristic to participate in public life or in any other activity in which participation by such persons is disproportionately low.

2. Equalities Impact Assessment:

This report is an information update for the Children and Young People Select Committee and therefore no impact has been identified.

This page is intentionally left blank

HAMPSHIRE COUNTY COUNCIL

Report

Committee:	Children and Young People Select Committee - Briefing
Date of meeting:	7 July 2021
Report Title:	Work Programme
Report From:	Chief Executive

Contact name: Members Services

Tel: 0370 7792351

Email: members.services@hants.gov.uk

1. Purpose of this Report

To discuss and consider topics for the Committee's forthcoming work programme and suggest any future topics for inclusion.

WORK PROGRAMME – CHILDREN AND YOUNG PEOPLE SELECT COMMITTEE

Topic	Issue	Reason for inclusion	7 July 2021 Briefing	17 September 2021	10 November 2021	14 January 2022	17 May 2022
Pre-scrutiny	Savings Programme 2023 – Revenue Savings Proposals	To pre-scrutinise prior to consideration by the Executive Lead Member for Children’s Services		X			
Pre-scrutiny	Consideration of revenue and capital budgets	To pre-scrutinise prior to consideration by the Executive Lead Member for Children’s Services				X	
Pre-scrutiny	Safeguarding Report – Children’s Services	To pre-scrutinise the annual safeguarding report prior to consideration by Cabinet on 7 December			X		
Overview	Autism Assessment Services	Following on from update received at 28 September 2020 Committee, further written updates were requested by the Committee for future meetings on progress made towards improving Autism services for children and young people in Hampshire	X	X	X Presentation to Cttee	X	X

Topic	Issue	Reason for inclusion	7 July 2021 Briefing	17 September 2021	10 November 2021	14 January 2022	17 May 2022
Overview	Child and Adolescent Mental Health Service (CAMHS)	To provide an update on CAMHS in Hampshire, to include progress made to reduce waiting times for access to CAMHS treatment. <i>Last update – November 2020</i> <i>A further update was requested by the Committee for the first meeting of the new administration.</i>		X			
Overview	Children's Services	Introduction to Children's Services department	X				
Overview	Governance	Introduction to Governance	X				
Overview	Elective Home Education	To provide an update on elective home education. <i>Last update - November 2019</i> <i>A further update was requested by the Committee.</i>					X

Topic	Issue	Reason for inclusion	7 July 2021 Briefing	17 September 2021	10 November 2021	14 January 2022	17 May 2022
Overview	Ethnic Minority and Traveller Achievement Service (EMTAS)	To receive a biennial update on the Hampshire EMTAS <i>Last update – January 2021</i> <i>Next update 2023</i>					
Overview	Fostering	To provide an overview of fostering in Hampshire.		X			
Overview	DfE Holiday Activities and Food (HAF) Programme	To provide an overview of the programme	X				
Overview	Holiday Activities and Food (HAF) programme Summer 2021	To provide an update on the impact and uptake of the summer scheme.			X		
Overview	SEND	To receive a regular update on SEND			X		

Topic	Issue	Reason for inclusion	7 July 2021 Briefing	17 September 2021	10 November 2021	14 January 2022	17 May 2022
Overview	School attainment	To provide an annual update on attainment of children and young people in Hampshire schools.				X	
Overview	Youth Services across the County	To provide an overview of challenges to Youth Services across the County. Requested by Cllr Porter					X
Overview	Youth Offending Service	To provide an overview of the youth offending service in Hampshire. Requested by Cllr James					X

REQUIRED CORPORATE AND LEGAL INFORMATION:

Links to the Strategic Plan

Hampshire maintains strong and sustainable economic growth and prosperity:	No
People in Hampshire live safe, healthy and independent lives:	Yes
People in Hampshire enjoy a rich and diverse environment:	No
People in Hampshire enjoy being part of strong, inclusive communities:	Yes

Section 100 D - Local Government Act 1972 - background documents

The following documents discuss facts or matters on which this report, or an important part of it, is based and have been relied upon to a material extent in the preparation of this report. (NB: the list excludes published works and any documents which disclose exempt or confidential information as defined in the Act.)

Document

Location

None

EQUALITIES IMPACT ASSESSMENT:

1. Equality Duty

The County Council has a duty under Section 149 of the Equality Act 2010 ('the Act') to have due regard in the exercise of its functions to the need to:

- Eliminate discrimination, harassment and victimisation and any other conduct prohibited by or under the Act with regard to the protected characteristics as set out in section 4 of the Act (age, disability, gender reassignment, marriage and civil partnership, pregnancy and maternity, race, religion or belief, sex and sexual orientation);
- Advance equality of opportunity between persons who share a relevant protected characteristic within section 149(7) of the Act (age, disability, gender reassignment, pregnancy and maternity, race, religion or belief, sex and sexual orientation) and those who do not share it;
- Foster good relations between persons who share a relevant protected characteristic within section 149(7) of the Act (see above) and persons who do not share it.

Due regard in this context involves having due regard in particular to:

- The need to remove or minimise disadvantages suffered by persons sharing a relevant protected characteristic that are connected to that characteristic;
- Take steps to meet the needs of persons sharing a relevant protected characteristic that are different from the needs of persons who do not share it;
- Encourage persons sharing a relevant protected characteristic to participate in public life or in any other activity in which participation by such persons is disproportionately low.

2. Equalities Impact Assessment:

This is a scrutiny review document setting out the work programme of the Committee. It does not therefore make any proposals which will impact on groups with protected characteristics.

This page is intentionally left blank